



Instruction Sheet

WARNING

1. Prior to installation, read instruction sheet manual and data sheet.
2. Prior to installation, inspect product for defects.
3. Verify that the electrical supply wires comply with data sheet/charts A, B, & C.
4. All electrical work and materials must comply with the National Electrical Codes (NEC), the Occupational Safety and Health Act (OSHA), and all state and local codes.
5. Installation work and electrical wiring must be done by a qualified person(s) in accordance with all applicable codes and standards, including fire-rated construction codes and standards.

How do I install H2 Homer Helpers?

STEP 1 Mount H2 to framing member

Mount H2 to framing member using #10 Pan Head wood screws or equivalent to. For maximum support, use six 1-1/4" screws to the face holes provided, plus two 2-1/2" screws through the corner holes (not included with purchase), for all mounting options (see figure 1A, 1B and figure 1C). Place H2 Homer Helpers with max spacing of 4-1/2' per NEC.

Figure 1A

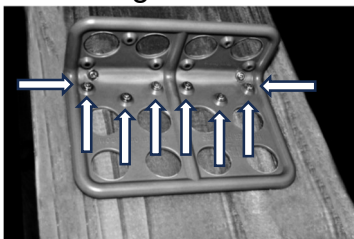


figure 1B

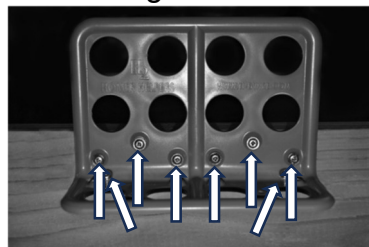
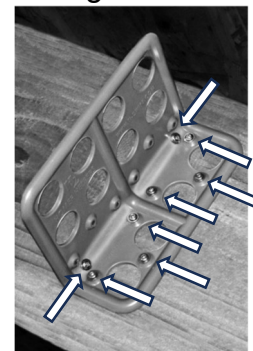


figure 1C



STEP 2 Route Supply Wires

Easily run your wire through 1-1/4" hole's provided.

TI-D Wire LLC

Website ti-dwire.com

Email sales@ti-dwire.com